

Logging into Clever from Home (Parent Directions)



Use Clever to stay connected to your student's education!

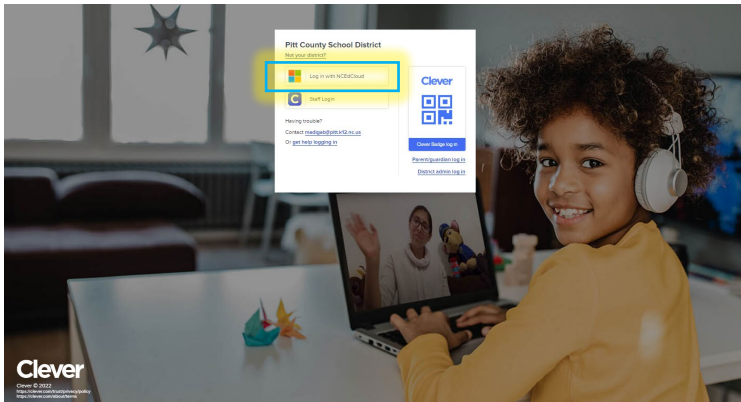
Do I need a special browser to log into Clever?

The new Edge or Google Chrome browser will work well with Clever and our other programs.

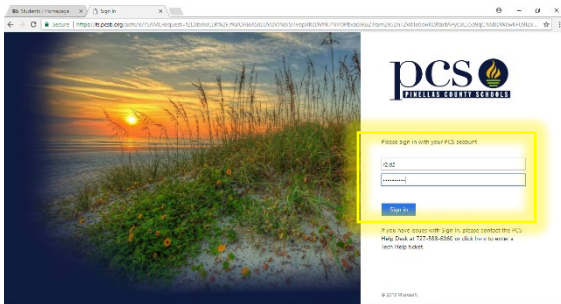
Getting to Clever

Step 1. Open your browser and go to <https://clever.com/in/pcsb>

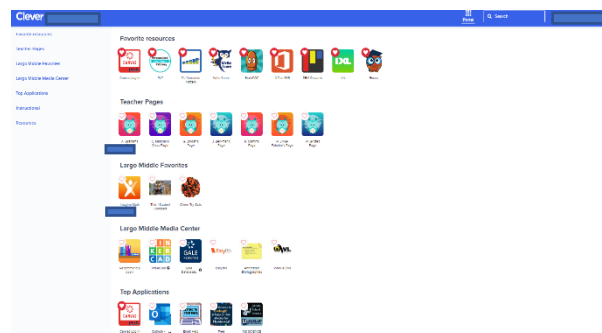
Step 2. Click on the 'Log In with Active Directory' box.



Step 3. It will take you to the login page, where you will enter your student's PCS username (R2.D2) and password. If you are using your student's PCS laptop, this step may not pop up.

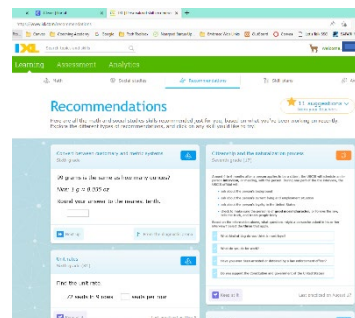


Step 4. If you get to this page, you have successfully logged into Clever and can now access your materials.



Example:

If you click on the IXL app, it will take you right to this page:



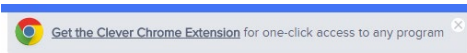
Logging into Clever from Home (Parent Directions)



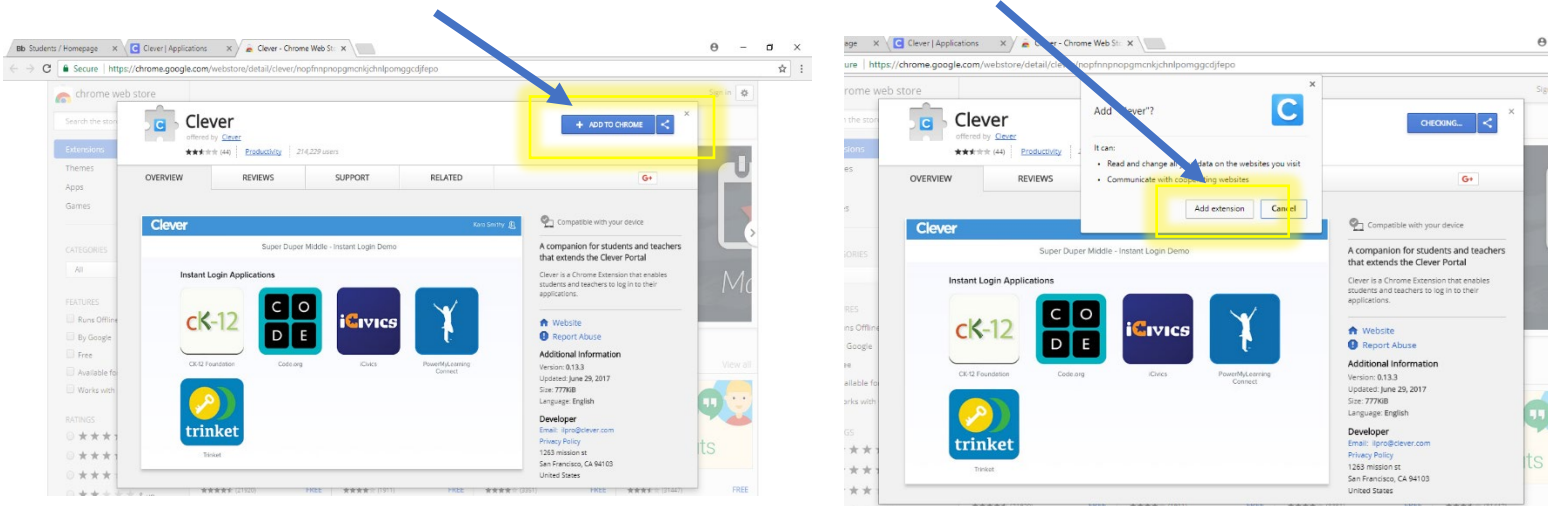
Do you want the system to save your passwords so you don't have to remember them?

Most of the programs you click on won't make you log in again, but there are one or two that might ask you to enter your username and password the first time you click on them. Following the steps below, you can install the Clever Chrome Extension, which will save your passwords.

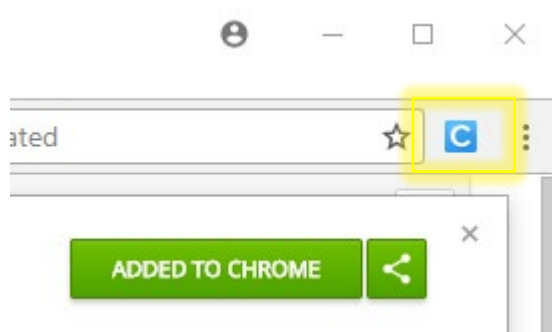
1. Click on the pop-up window that appears in Clever the first time you log in to get the Clever Chrome Extension.



2. Click on the blue + ADD TO CHROME button. When it pops up click the ADD EXTENSION button.



You will know it has been installed when you see a little blue box with a white C in the upper right-hand corner of your Chrome browser.



Resources

Clever Login instructions for multilingual families <https://clever.com/learning-at-home/families>